

DERAILMENT SAFETY TEST.

TWIST / YAW / SWAY TEST RIG

dQ/Q

X-FACTOR

SWAY

DERAILMENT SAFETY TEST. TWIST / YAW / SWAY

DSTRIG.

DSTRIG.

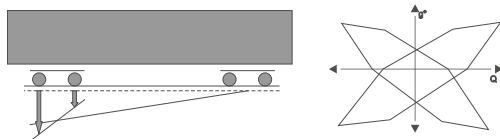
The DSTRIG. consists of a rotational resistance part and a twist/sway part. The entire machine is controlled by modern PLC system incl. HMI (human machine interface). The twist/sway part is available in a wheelset or single wheel system. The wheelset solution is supported by own wheels to be transported easily to the place of testing. All parts are easy to maintain and easy to be lifted by a crane or fork lift. The integration of electric actuators allows the customers a maximum of flexibility and maintainability. Gauges from 1000 to 1676 mm can be tested. Other special gauges due to request. The test rig can be loaded with an axle load up to 25 t and a maximum rotational angle of $\pm 15^\circ$. The single wheel version twist / sway will be placed by crane or fork lift on a concrete base. The wheelset version will be placed directly on track. Both are almost free in choice of wheelbase and gauge. Creating a database of your vehicles is the first step using the DSTRIG.. The technical vehicle data will be used to automatically create e.g. needed twist displacement depending on gauge, wheelbase, pin center distance, etc.

TECHNICAL FEATURES

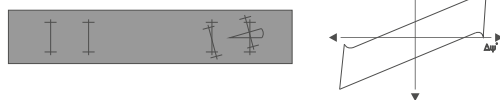
- . X-Factor determination
- . dQ/Q measurement
- . Sway angle measurement
- . Resistance to turn over simulation
- . Bogie and carbody twist simulation

EN 14363 Tests

Twist



Rotational resistance



Sway



HEMSCHIEDT ENGINEERING GMBH & CO. KG

GSTEINACHER STRASSE 41

90537 FEUCHT

GERMANY

T +49 9128.9253.300

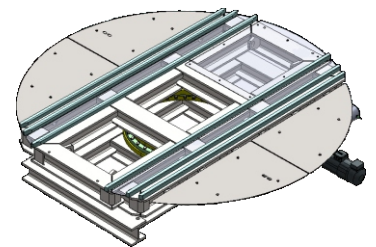
F +49 9128.9253.319

E H-ENG@HEMSCHIEDT-ENGINEERING.DE

W WWW.HEMSCHIEDT-ENGINEERING.DE

DSTRIG. Rotational resistance

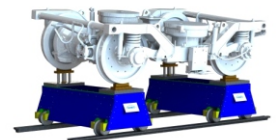
- . Rotational resistance factor determination by torque measurement
- . External wheel load determination
- . Up to $\pm 15^\circ$ yaw angle
- . Up to 50kNm torque
- . Max. wheelset load 25 t
- . Available as under floor test rig or standard on floor version
- . HMI interface
- . Vehicle database option
- . Automatic test report



DSTRIG. Rotational resistance

DSTRIG. Twist and Sway

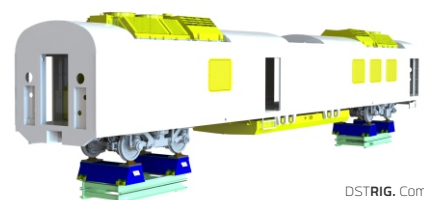
- . Max. wheelset load 25 t
- . Max. twist 8‰
- . Each wheel to be positioned independently
- . Sway up to superelevation of 180 mm
- . Available as under floor test rig or floor version
- . HMI interface
- . Vehicle database option
- . Automatic test report generation



DSTRIG. Twist and Sway

DSTRIG. Complete

- . All twist, sway and rotational resistance application included



DSTRIG. Complete